

# CLAIM YOUR PLACE AT THE PARK

125  
West  
57<sup>th</sup>

| FLOOR | RSF        | CEILING HEIGHT |                                                    |
|-------|------------|----------------|----------------------------------------------------|
| 30    | 10,290 RSF | 13'-8"         |                                                    |
| 29    | 9,940 RSF  | 13'-8"         | <i>terrace</i>                                     |
| 28    | 10,290 RSF | 13'-5"         |                                                    |
| 27    | 10,290 RSF | 13'-5"         | <i>terrace</i>                                     |
| 26    | 10,290 RSF | 13'-5"         |                                                    |
| 25    | 10,290 RSF | 13'-5"         | <i>terrace</i>                                     |
| 24    | 10,290 RSF | 13'-5"         |                                                    |
| 23    | 10,290 RSF | 13'-5"         | <i>terrace</i>                                     |
| 22    | 10,290 RSF | 13'-5"         |                                                    |
| 21    | 10,290 RSF | 13'-5"         | <i>terrace</i>                                     |
| 20    | 10,280 RSF | 13'-5"         |                                                    |
| 19    | 10,280 RSF | 13'-5"         | <i>terrace</i>                                     |
| 18    | 10,280 RSF | 13'-5"         |                                                    |
| 17    | 10,280 RSF | 13'-5"         | <i>terrace</i>                                     |
| 16    | 8,460 RSF  | 13'-5"         | <p>DUPLIX OPPORTUNITY WITH DOUBLE HEIGHT SPACE</p> |
| 15    | 10,280 RSF | 13'-5"         |                                                    |
| 14    | 10,275 RSF | 13'-5"         |                                                    |



# OFFICE INTENSIVE TEST FIT

FLOOR 17 – 10,280 RSF

CENTRAL PARK



13'-5" CEILING HEIGHT

250 SF TERRACE OVERLOOKING CENTRAL PARK

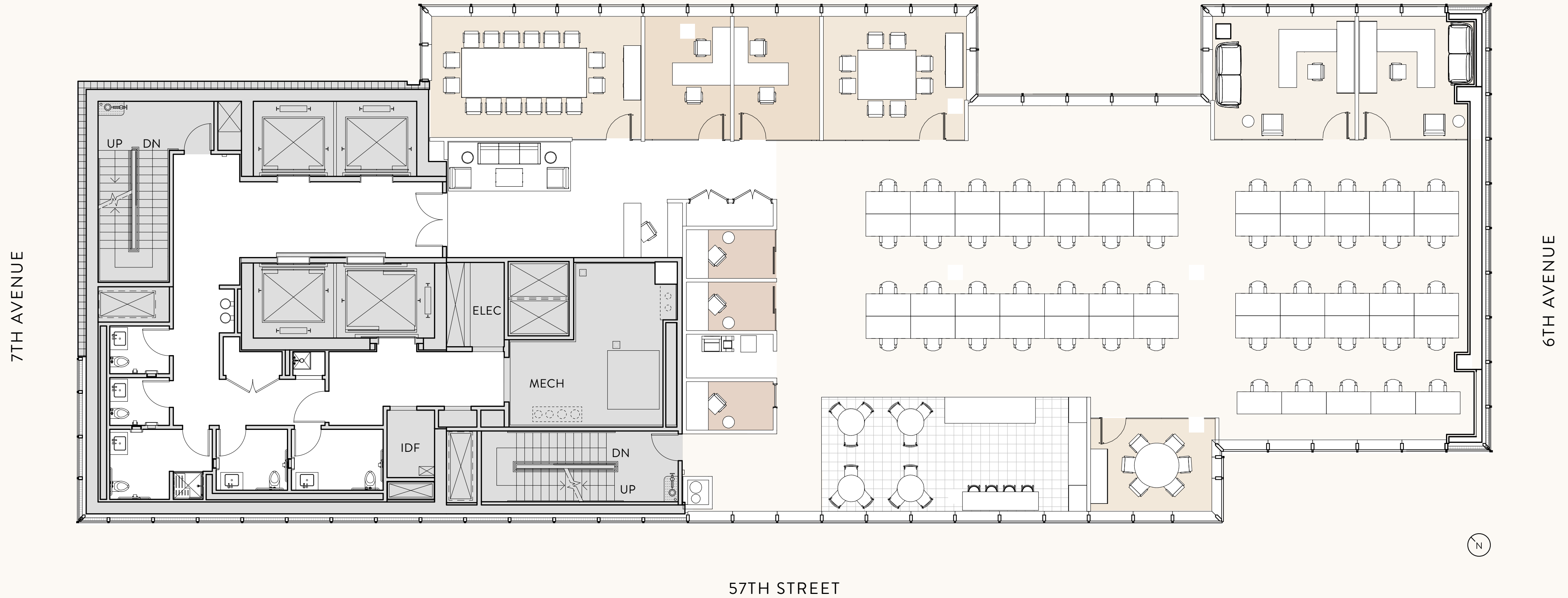
|                     |    |                         |           |
|---------------------|----|-------------------------|-----------|
| ■ STANDARD OFFICE   | 07 | ■ 10 PERSON CONFERENCE  | 01        |
| ■ PARTNER OFFICE    | 02 | ■ 6-8 PERSON CONFERENCE | 02        |
| ■ LARGE WORKSTATION | 02 | ■ PHONE ROOM            | 03        |
| ■ WORKSTATION       | 20 | ■ TERRACE               | 01        |
| <b>TOTAL SEATS</b>  |    |                         | <b>31</b> |

TEST FIT

# OPEN TEST FIT

FLOOR 18 – 10,280 RSF

CENTRAL PARK



13'-5" CEILING HEIGHT

|                    |           |                       |    |
|--------------------|-----------|-----------------------|----|
| ■ STANDARD OFFICE  | 02        | ■ 16 PERSON BOARDROOM | 01 |
| ■ PARTNER OFFICE   | 02        | ■ 8 PERSON CONFERENCE | 01 |
| ■ WORKSTATION      | 53        | ■ 6 PERSON CONFERENCE | 01 |
| <b>TOTAL SEATS</b> | <b>57</b> | ■ PHONE ROOM          | 03 |

TEST FIT

# OPEN TEST FIT

FLOOR 19 – 10,280 RSF

FLOOR 23, 27 – 10,290 RSF

CENTRAL PARK



13'-5" CEILING HEIGHT

250 SF TERRACE OVERLOOKING CENTRAL PARK

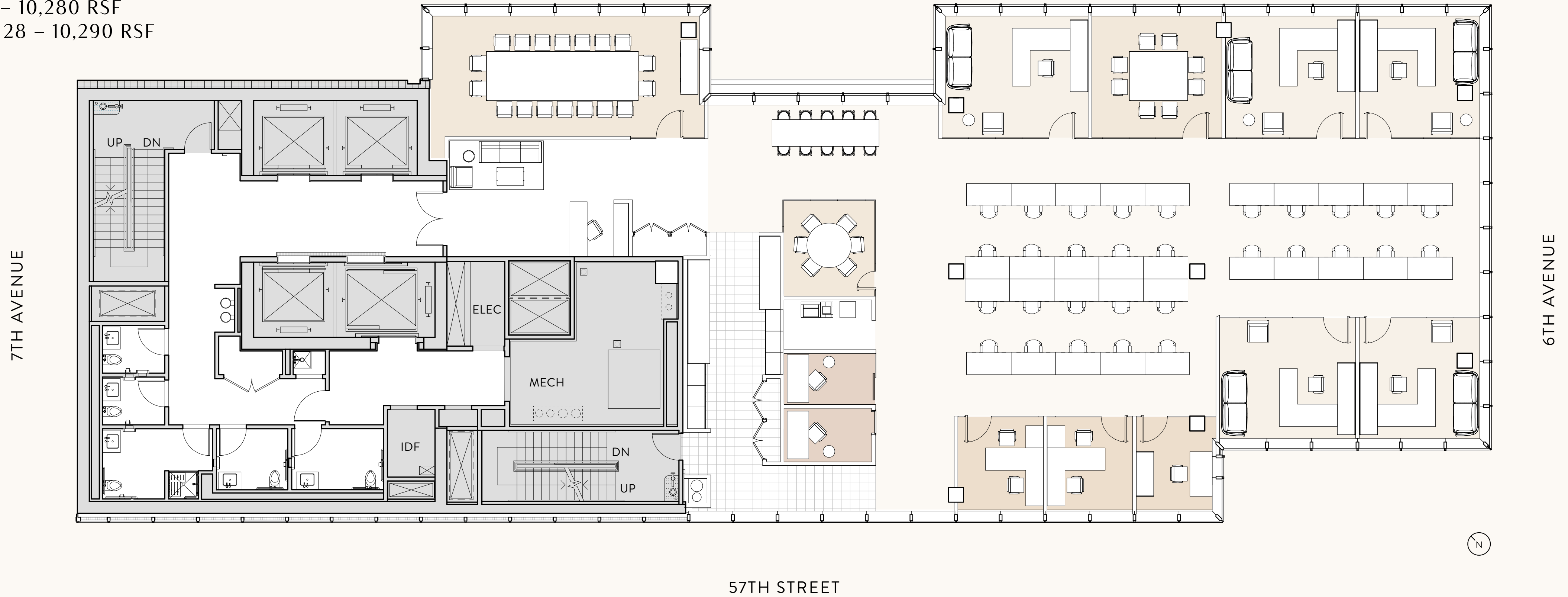
|                    |           |
|--------------------|-----------|
| □ PARTNER OFFICE   | 02        |
| □ WORKSTATION      | 48        |
| <b>TOTAL SEATS</b> | <b>50</b> |

|                         |    |
|-------------------------|----|
| □ 12 PERSON CONFERENCE  | 02 |
| □ 6-8 PERSON CONFERENCE | 01 |
| □ PHONE ROOM            | 03 |
| □ TERRACE               | 01 |

# OFFICE INTENSIVE TEST FIT

FLOOR 20 – 10,280 RSF  
FLOOR 24, 28 – 10,290 RSF

CENTRAL PARK



13'-5" CEILING HEIGHT

|                    |           |                       |    |
|--------------------|-----------|-----------------------|----|
| ■ STANDARD OFFICE  | 03        | ■ 18 PERSON BOARDROOM | 01 |
| ■ PARTNER OFFICE   | 05        | ■ 8 PERSON CONFERENCE | 01 |
| ■ WORKSTATION      | 30        | ■ 6 PERSON CONFERENCE | 01 |
| <b>TOTAL SEATS</b> | <b>38</b> | ■ PHONE ROOM          | 02 |

# OFFICE INTENSIVE TEST FIT

FLOOR 21, 25 – 10,290 RSF

CENTRAL PARK



13'-5" CEILING HEIGHT

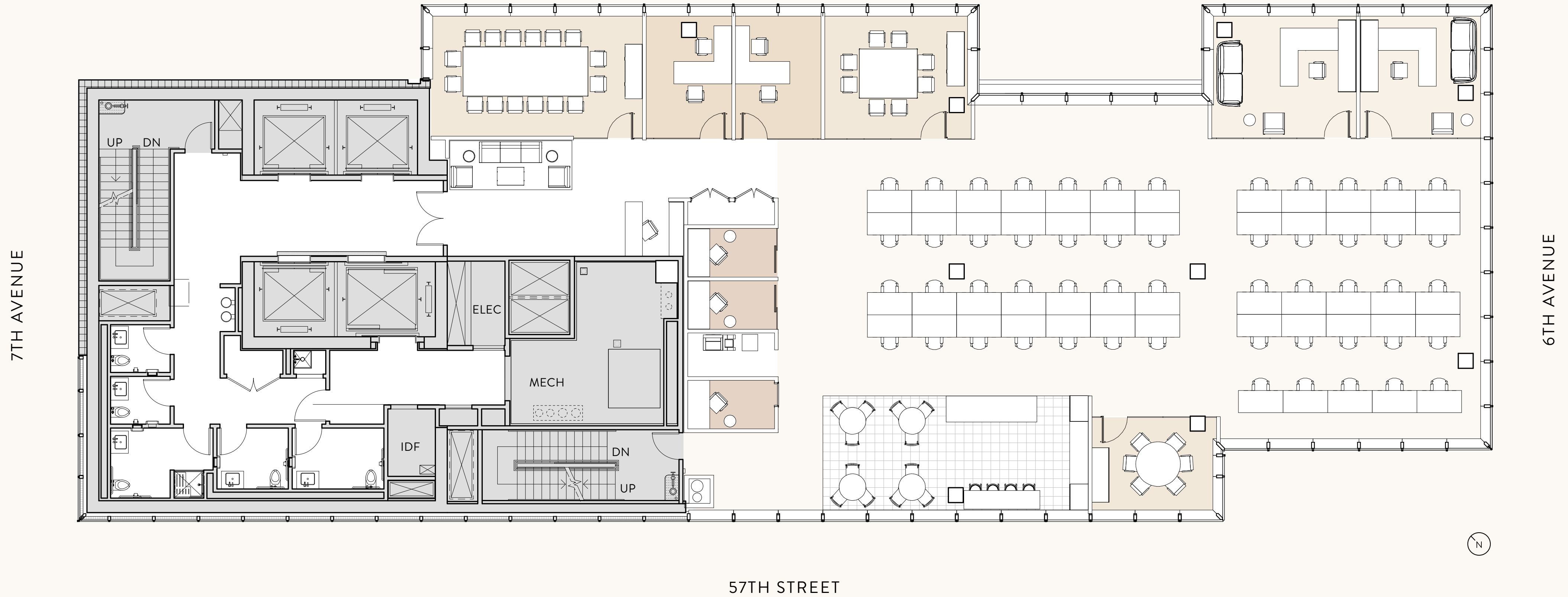
250 SF TERRACE OVERLOOKING CENTRAL PARK

|                    |           |                       |    |
|--------------------|-----------|-----------------------|----|
| STANDARD OFFICE    | 07        | 10 PERSON CONFERENCE  | 01 |
| PARTNER OFFICE     | 02        | 6-8 PERSON CONFERENCE | 02 |
| LARGE WORKSTATION  | 02        | PHONE ROOM            | 03 |
| WORKSTATION        | 20        | TERRACE               | 01 |
| <b>TOTAL SEATS</b> | <b>31</b> |                       |    |

# OPEN TEST FIT

FLOOR 22, 26, 30 – 10,290 RSF

CENTRAL PARK



13'-5" CEILING HEIGHT (22, 26)

13'-8" CEILING HEIGHT (30)

|                    |           |
|--------------------|-----------|
| ■ STANDARD OFFICE  | 02        |
| ■ PARTNER OFFICE   | 02        |
| □ WORKSTATION      | 53        |
| <b>TOTAL SEATS</b> | <b>57</b> |

|                       |    |
|-----------------------|----|
| ■ 16 PERSON BOARDROOM | 01 |
| ■ 8 PERSON CONFERENCE | 01 |
| ■ 6 PERSON CONFERENCE | 01 |
| ■ PHONE ROOM          | 03 |

TEST FIT

# OFFICE INTENSIVE TEST FIT

FLOOR 29 – 9,940 RSF

CENTRAL PARK



13'-8" CEILING HEIGHT

250 SF TERRACE OVERLOOKING CENTRAL PARK

|                    |           |                        |    |
|--------------------|-----------|------------------------|----|
| ■ STANDARD OFFICE  | 04        | ■ 10 PERSON CONFERENCE | 01 |
| ■ PARTNER OFFICE   | 03        | ■ 8 PERSON CONFERENCE  | 01 |
| □ WORKSTATION      | 34        | ■ PHONE ROOM           | 04 |
| <b>TOTAL SEATS</b> | <b>41</b> | ■ TERRACE              | 01 |

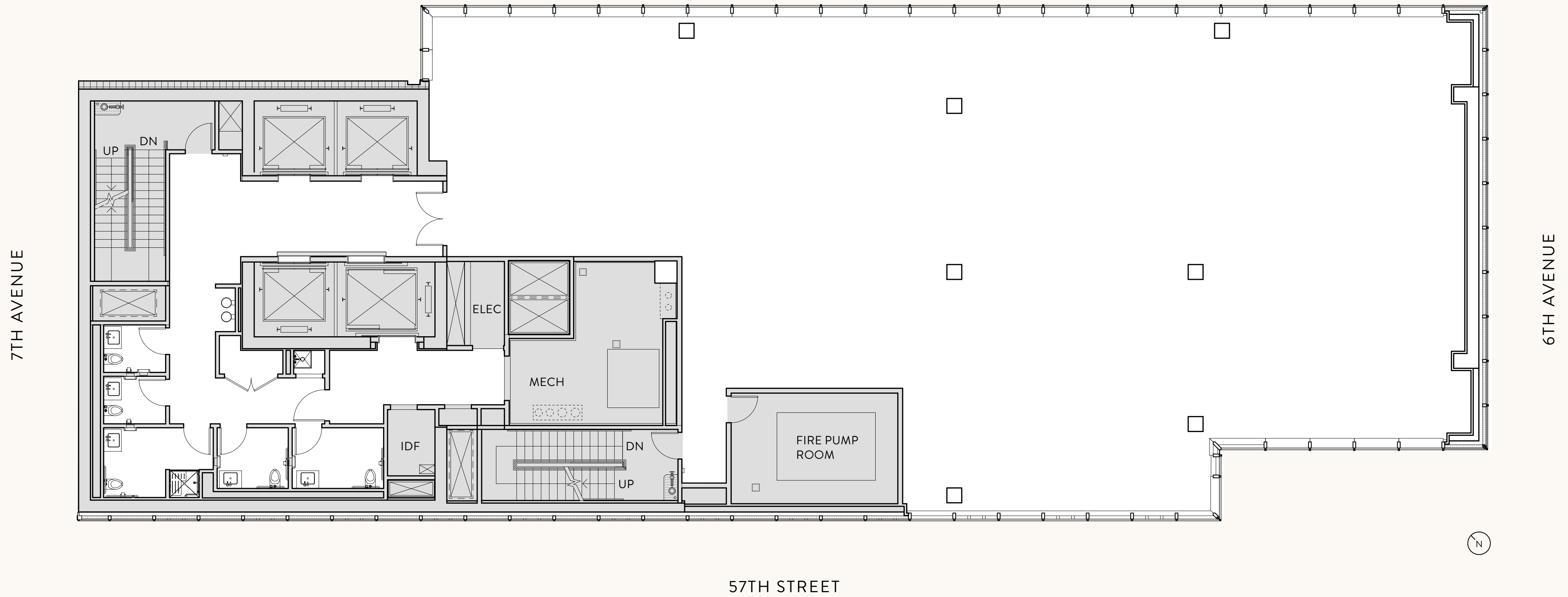


CORE & SHELL

# FLOOR 14

10,275 RSF

CENTRAL PARK



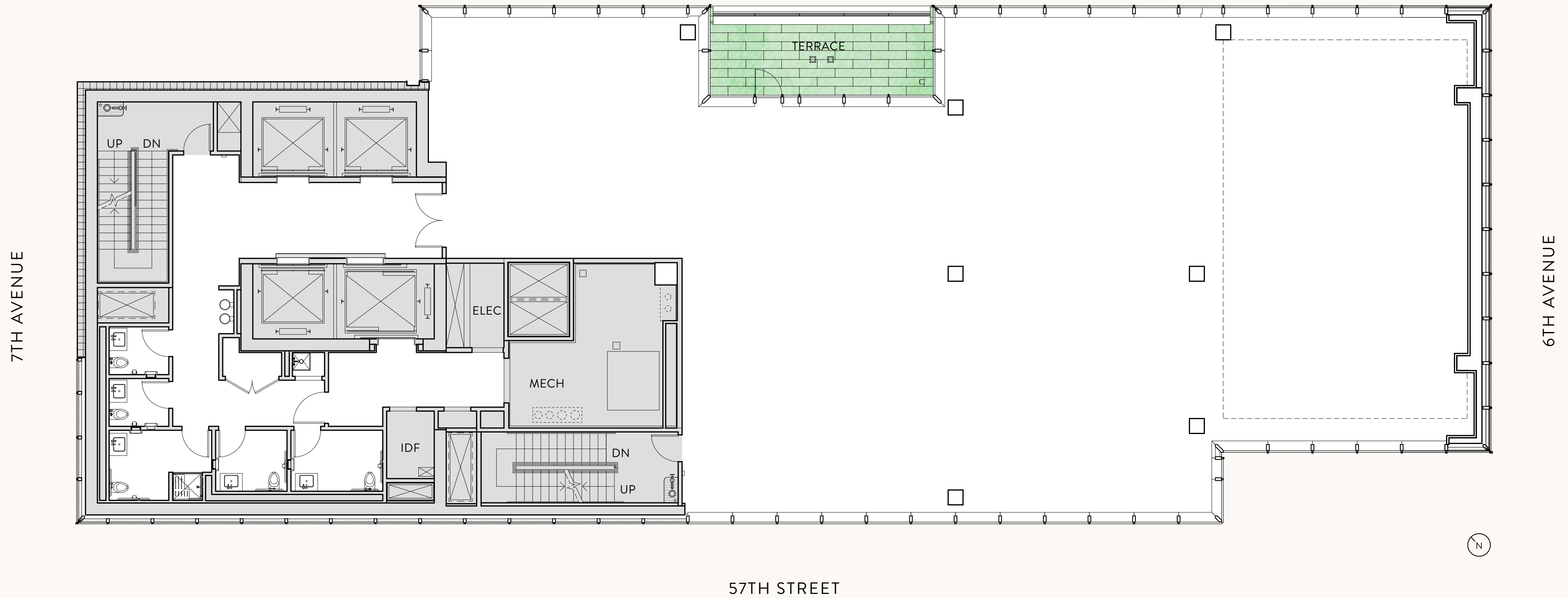
13'-5" CEILING HEIGHT

CORE & SHELL

# FLOOR 15

10,280 RSF

CENTRAL PARK



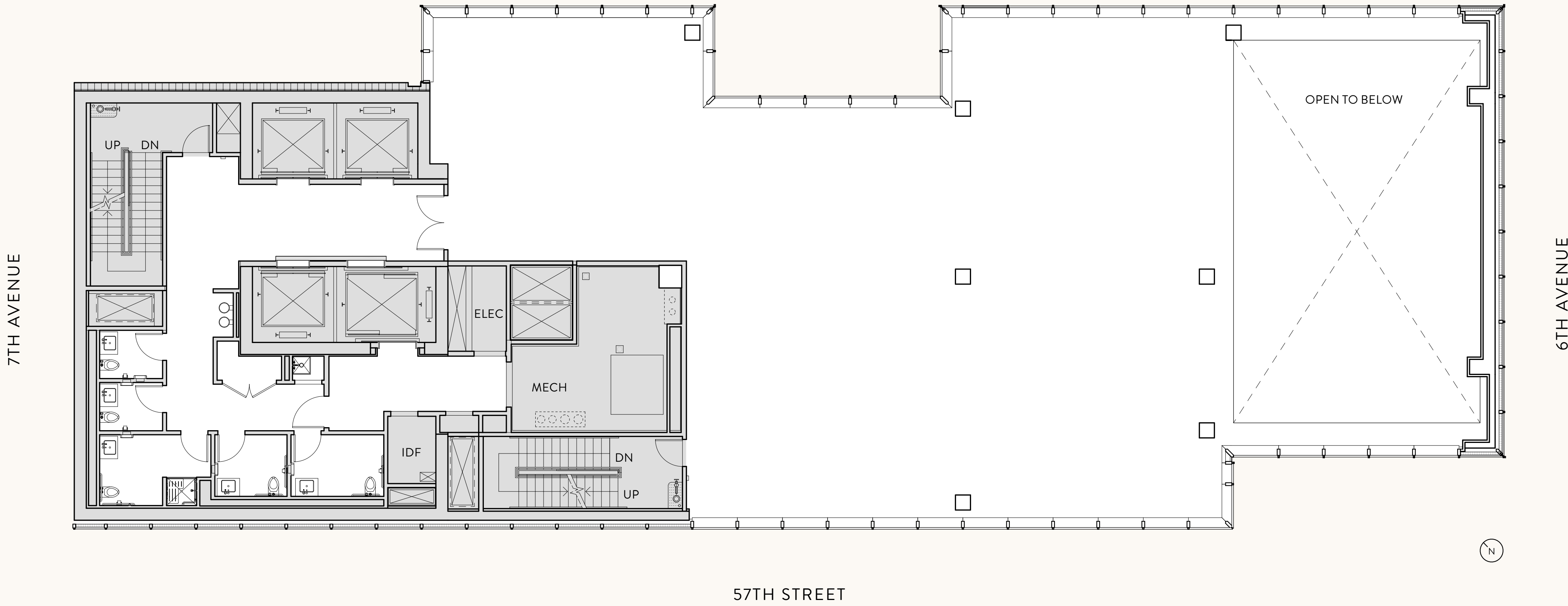
13'-5" / 27'-8" CEILING HEIGHT

250 SF TERRACE OVERLOOKING CENTRAL PARK

# FLOOR 16

8,460 RSF

CENTRAL PARK



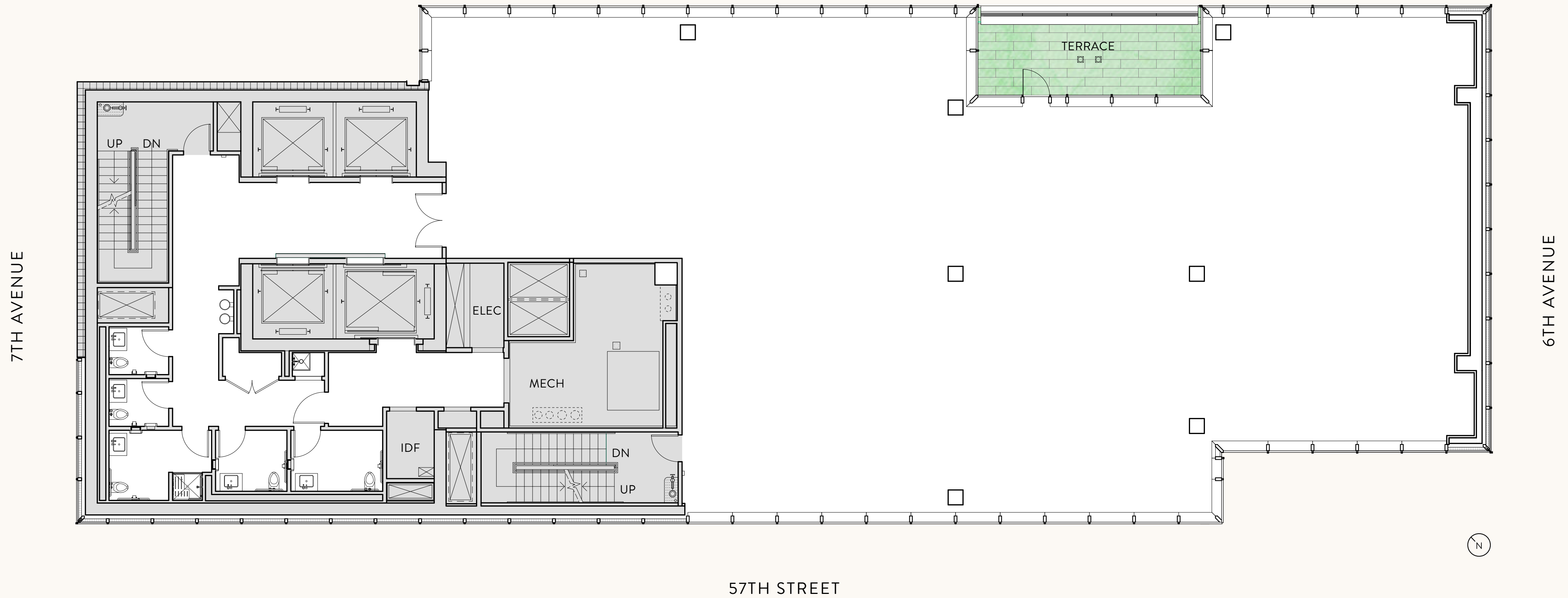
13'-5" CEILING HEIGHT

CORE & SHELL

# FLOOR 17

10,280 RSF

CENTRAL PARK



13'-5" CEILING HEIGHT

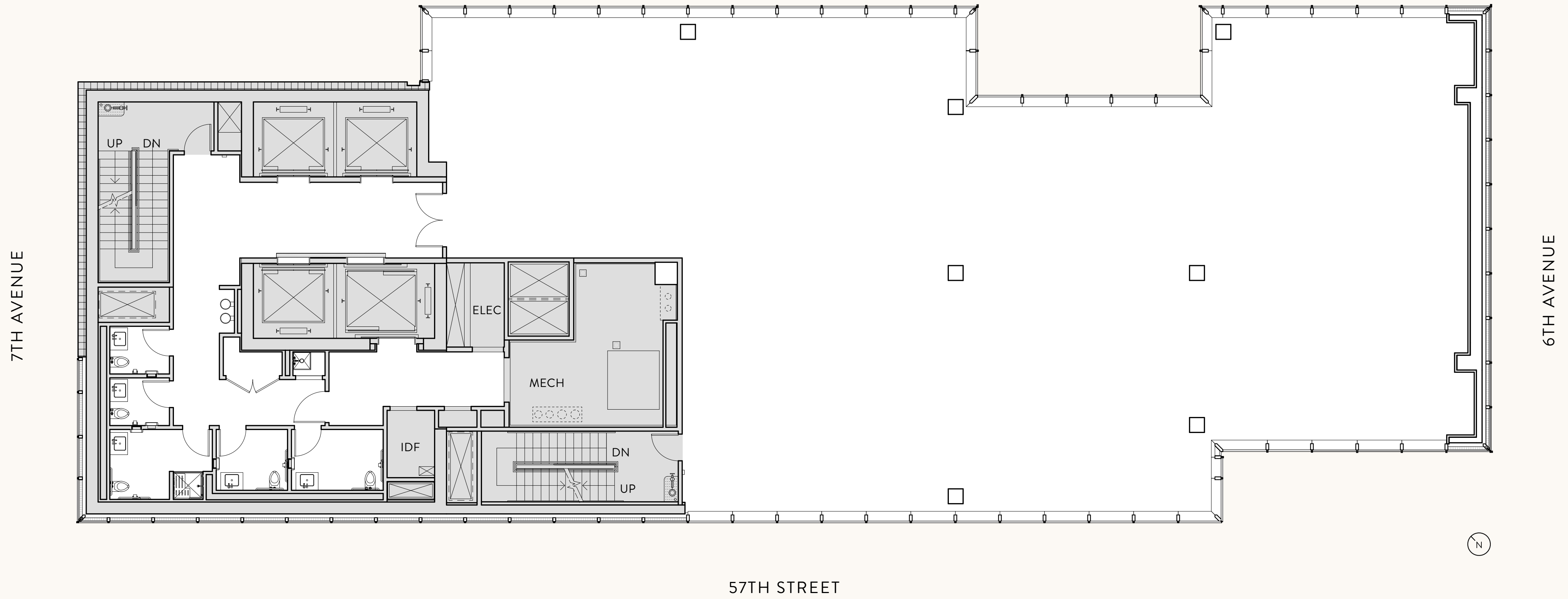
250 SF TERRACE OVERLOOKING CENTRAL PARK

CORE & SHELL

# FLOOR 18

10,280 RSF

CENTRAL PARK



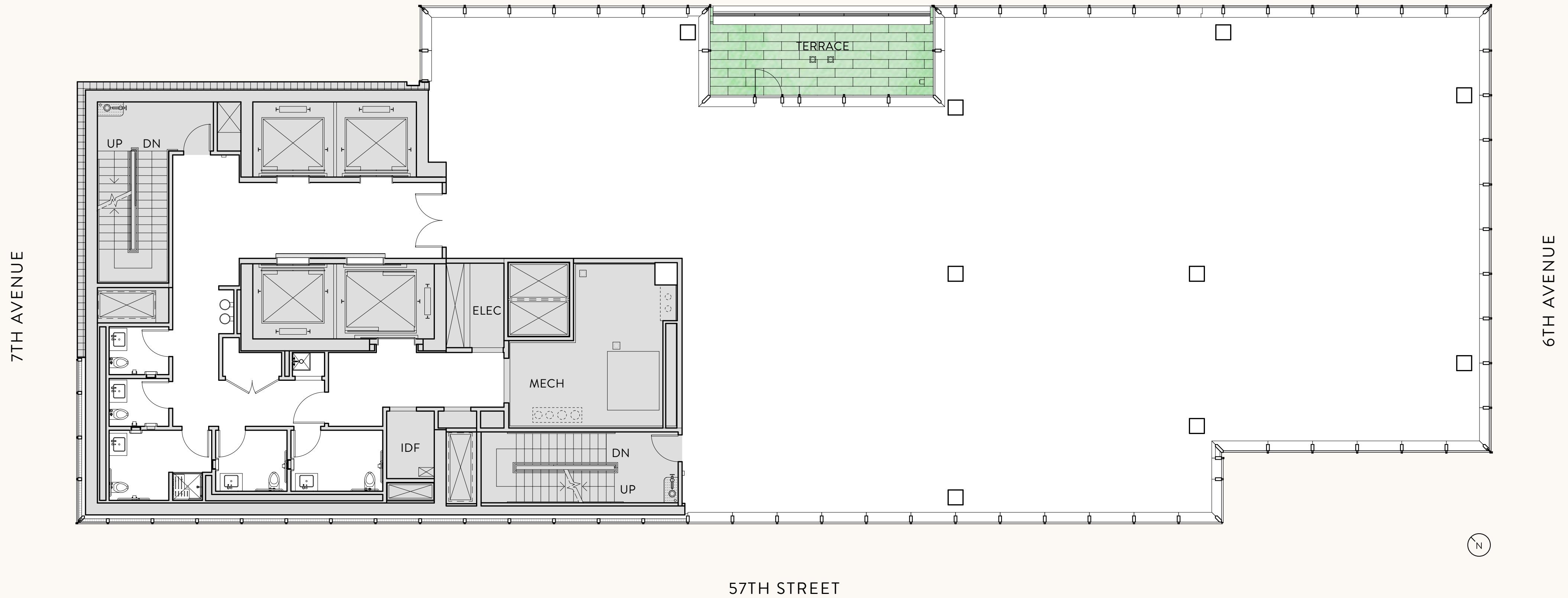
13'-5" CEILING HEIGHT

CORE & SHELL

# FLOOR 19,23,27

10,280 RSF (19) / 10,290 RSF (23,27)

CENTRAL PARK



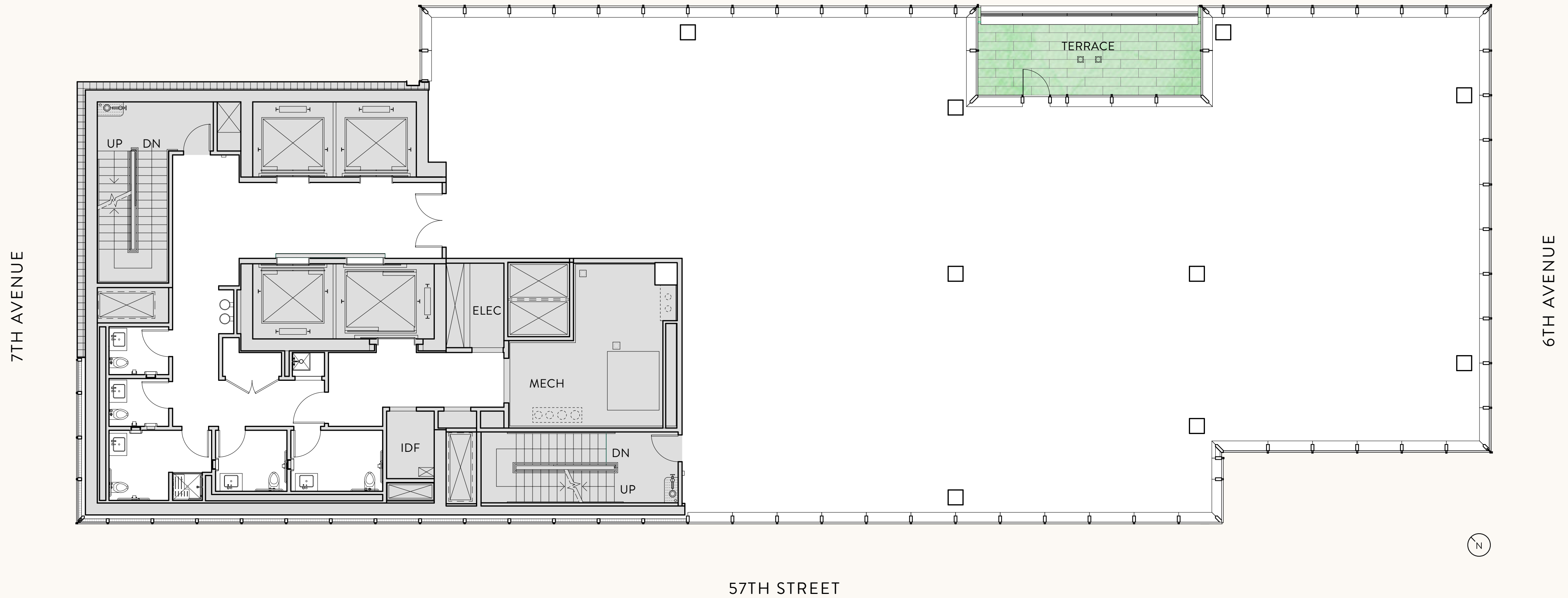
13'-5" CEILING HEIGHT

250 SF TERRACE OVERLOOKING CENTRAL PARK

# FLOOR 21,25

10,290 RSF

CENTRAL PARK



13'-5" CEILING HEIGHT

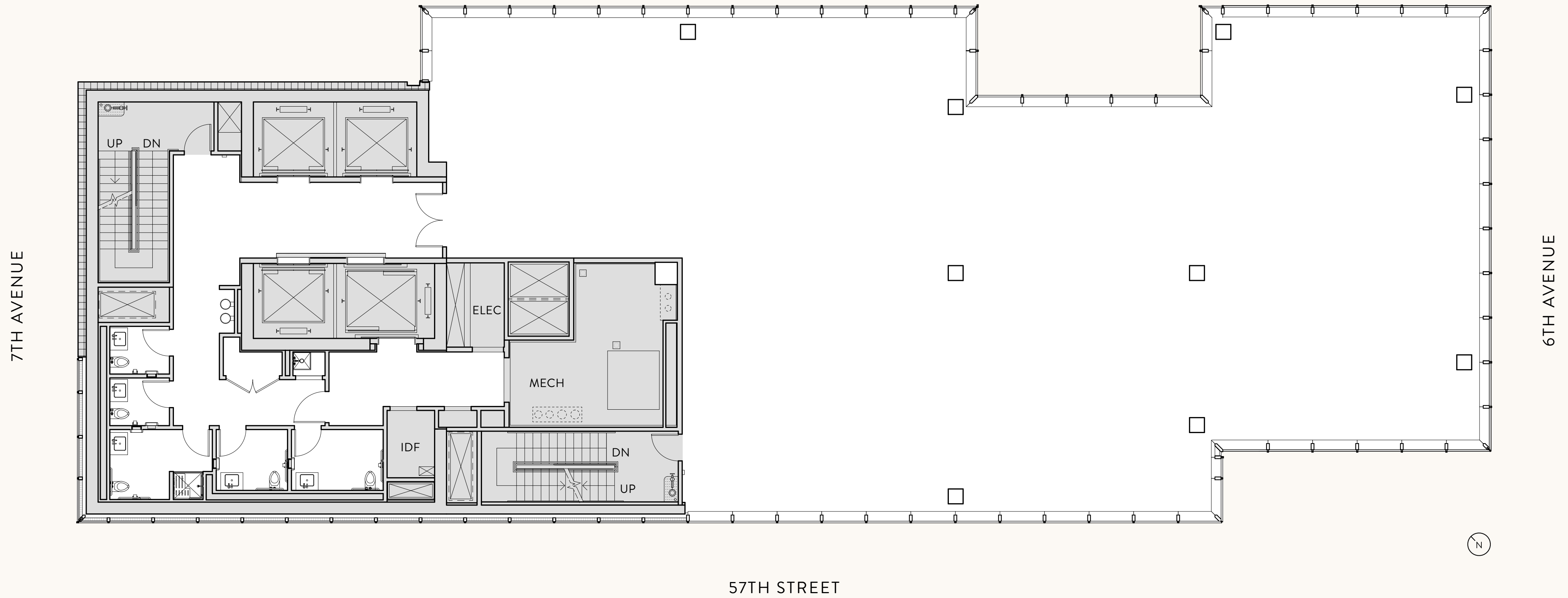
250 SF TERRACE OVERLOOKING CENTRAL PARK

CORE & SHELL

# FLOOR 22,26,30

10,290 RSF

CENTRAL PARK



13'-5" CEILING HEIGHT (22,26)

13'-8" CEILING HEIGHT (30)

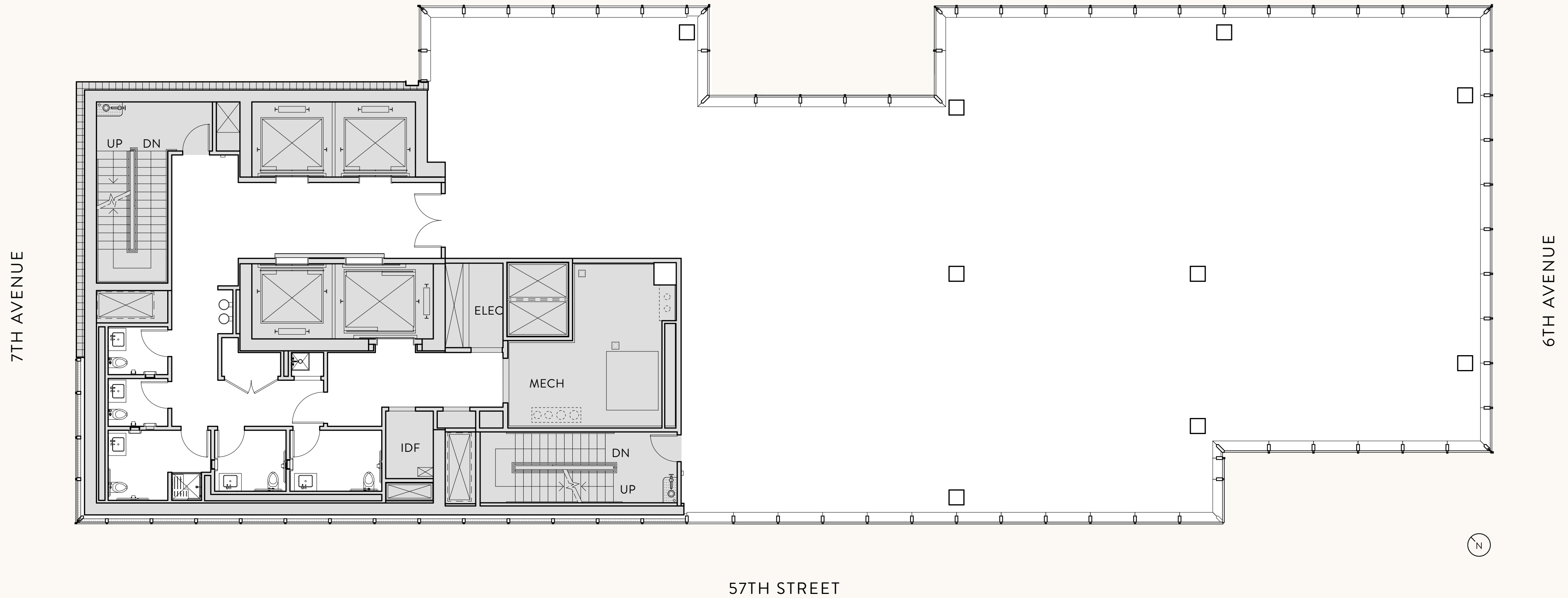


CORE & SHELL

# FLOOR 20,24,28

10,280 RSF (20) / 10,290 RSF (24, 28)

CENTRAL PARK

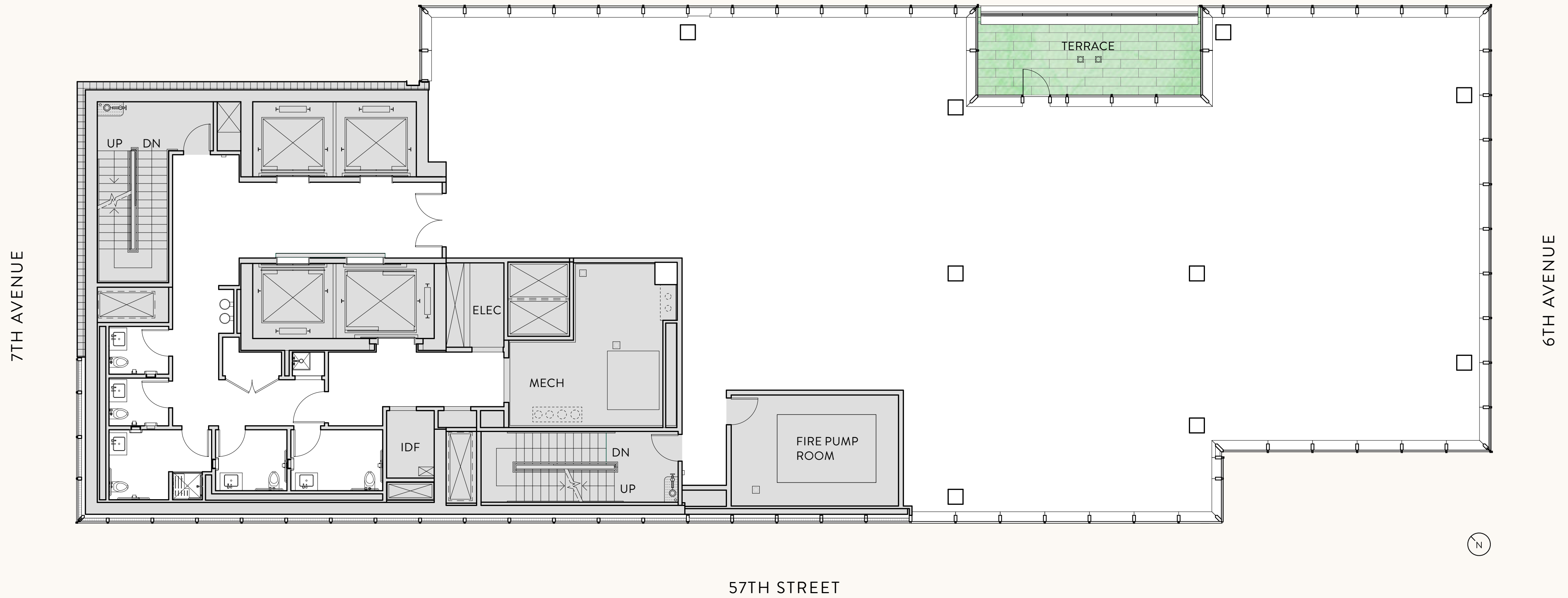


13'-5" CEILING HEIGHT

# FLOOR 29

9,940 RSF

CENTRAL PARK



13'-8" CEILING HEIGHT

250 SF TERRACE OVERLOOKING CENTRAL PARK